



#### ✿ GL APPLICATION

The GL series is primarily a return, exhaust and fresh air grille which can be used in commercial or residential buildings. The GL can also be used as an economical supply grille. Grille is constructed of extruded aluminium or steel.

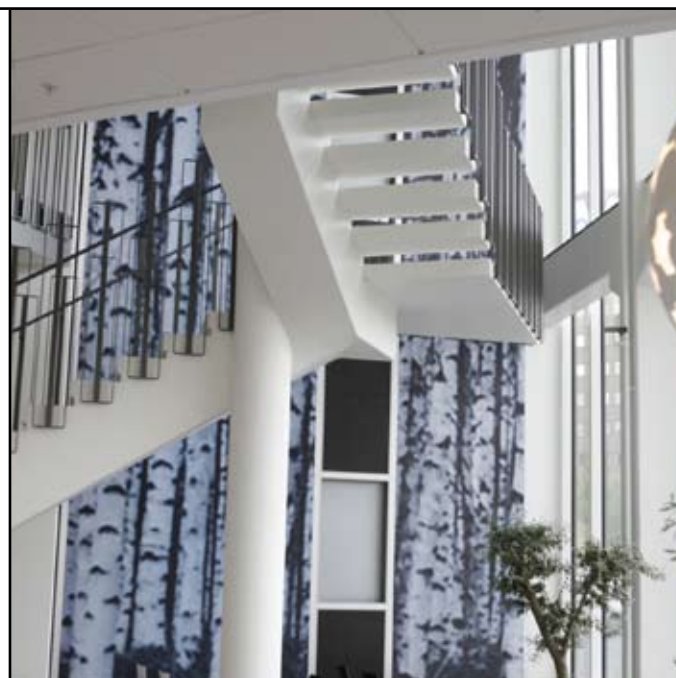
The GL grille can be mounted in a panel for a standard T-bar ceiling. An optional with filter section is available. Maximum single piece size is 48" x 36"- larger sizes assembled in multiple sections.

#### ✿ GL STANDARD CONSTRUCTION / FEATURES

- Frame & blade are made of extruded aluminum A6063 T5, steel or SUS 304 stainless steel.
- Phosphate treated and powder coated white RAL 9010 as standard (except SUS304).

#### ✿ GL STANDARD DIMENSION

- B 300x300mm, B 600x600mm, B 200x600mm.
- Custom made dimension are also available.





### ✦ GL PERFORMANCE DATA

Grilles Sizes In Inch	A.K Factor in Sq.Ft	Face Velocity (fpm)						
		300	400	500	600	700	800	900
		Negative Static Pressure ("W.G)						
		0.032	0.057	0.089	0.128	0.175	0.217	0.274
		AirFlow (cfm)						
10 x 4	0.14	42	56	70	84	98	112	126
	NC	<15	<15	16	23	29	34	38
12 x 4	0.17	51	68	65	102	119	136	153
	NC	<15	<15	17	24	30	34	39
14 x 4	0.2	60	80	100	120	140	160	180
	NC	<15	16	21	26	32	36	40
16 x 4	0.23	69	92	115	138	161	184	207
	NC	<15	19	24	28	34	38	42
18 x 4	0.26	78	104	130	156	182	208	234
	NC	<15	21	27	31	36	40	44
6 x 6	0.07	21	28	35	42	49	56	63
	NC	<15	<15	<15	20	25	28	31
8 x 6	0.1	30	40	50	60	70	80	90
	NC	<15	<15	<15	21	27	30	32
10 x 6	0.13	39	52	65	78	91	104	117
	NC	<15	<15	16	23	28	31	34
12 x 6	0.18	54	72	90	108	126	144	162
	NC	<15	<15	18	25	30	33	36
14 x 6	0.26	78	104	130	156	182	208	234
	NC	<15	<15	19	26	30	34	38
16 x 6	0.33	99	132	165	198	231	264	297
	NC	<15	<15	20	27	31	35	39
18 x 6	0.4	120	160	200	240	280	320	360
	NC	<15	15	22	29	32	36	40
20 x 6	0.48	144	192	240	288	336	384	432
	NC	<15	16	24	30	33	37	41
22 x 6	0.56	168	224	280	226	392	448	504
	NC	<15	17	25	30	34	37	41
24 x 6	0.63	189	252	315	378	441	504	567
	NC	<15	18	27	31	35	38	42
26 x 6	0.71	213	285	355	468	497	568	639
	NC	<15	19	28	32	35	38	42
28 x 6	0.78	234	312	390	510	546	624	702
	NC	<15	20	29	320	36	39	43
30 x 6	0.85	255	340	425	576	595	680	765
	NC	15	20	29	33	36	39	43
32 x 6	0.96	288	384	480	642	672	768	864
	NC	15	21	29	33	36	39	43
36 x 6	1.07	321	428	535	642	749	856	963
	NC	16	22	30	33	37	40	44

### ✦ GL PERFORMANCE DATA

Grilles Sizes In Inch	A.K Factor in Sq.Ft	Face Velocity (fpm)						
		300	400	500	600	700	800	900
		Negative Static Pressure ("W.G)						
		0.032	0.057	0.089	0.128	0.175	0.217	0.274
		AirFlow (cfm)						
8 x 8	0.13	39	52	65	78	91	104	117
	NC	<15	<15	16	23	28	31	34
10 x 8	0.23	69	92	115	138	161	184	207
	NC	<15	<15	18	26	30	33	36
12 x 8	0.33	99	132	165	198	231	264	297
	NC	<15	<15	20	27	31	34	37
14 x 8	0.43	129	172	215	258	301	344	387
	NC	<15	<15	22	28	32	36	39
16 x 8	0.53	159	21	265	318	371	424	477
	NC	<15	16	24	29	33	37	40
18 x 8	0.63	189	252	315	378	441	504	567
	NC	<15	18	26	30	34	38	41
20 x 8	0.72	216	288	360	432	504	576	648
	NC	<15	19	27	31	35	39	42
22 x 8	0.82	246	328	410	492	574	656	738
	NC	<15	20	27	31	35	39	42
24 x 8	0.92	276	368	460	552	644	736	828
	NC	15	21	28	32	36	40	43
26 x 8	1.02	306	408	510	612	714	816	918
	NC	15	22	29	33	37	40	43
28 x 8	1.12	336	448	560	672	784	896	1008
	NC	16	23	30	34	38	41	44
30 x 8	1.22	366	488	610	732	854	976	1098
	NC	16	23	30	34	38	41	44
32 x 8	1.32	396	528	660	792	924	1056	1188
	NC	16	24	31	35	39	42	45
36 x 8	1.52	456	608	760	912	1064	1216	1368
	NC	17	24	31	35	39	42	45
40 x 8	1.72	516	688	860	1032	1204	1376	1548
	NC	17	24	32	36	10	43	46
48 x 8	1.92	576	768	960	1152	1344	1536	1728
	NC	18	28	33	37	41	44	47
10 x 10	0.36	108	144	180	216	252	288	324
	NC	<15	<15	25	30	34	37	41
12 x 10	0.48	144	192	240	288	336	384	432
	NC	<15	15	23	29	33	37	41
14 x 10	0.61	183	244	305	366	427	488	549
	NC	<15	19	28	31	34	38	42
16 x 10	0.73	219	292	365	438	511	584	657
	NC	<15	19	27	32	35	39	42
18 x 10	0.85	255	340	425	510	595	680	765
	NC	15	20	29	33	37	40	43

### ✦ GL PERFORMANCE DATA

Grilles Sizes In Inch	A.K Factor in Sq.Ft	Face Velocity (fpm)						
		300	400	500	600	700	800	900
		Negative Static Pressure ("W.G)						
		0.032	0.057	0.089	0.128	0.175	0.217	0.274
		AirFlow (cfm)						
<b>20 x 10</b>	0.97	291	388	485	582	679	776	873
	NC	15	21	28	32	36	40	43
<b>22 x 10</b>	1.1	330	440	550	660	770	880	990
	NC	16	22	29	33	37	41	44
<b>24 x 10</b>	1.22	366	488	610	732	854	976	1098
	NC	16	22	29	33	37	41	44
<b>26 x 10</b>	1.33	399	533	666	799	933	1066	1066
	NC	16	22	29	33	37	41	44
<b>28 x 10</b>	1.44	433	576	720	864	1008	1152	1296
	NC	17	24	31	34	39	42	45
<b>30 x 10</b>	1.59	477	636	795	954	1113	1272	1431
	NC	17	24	31	34	39	42	45
<b>32 x 10</b>	1.72	516	688	860	1032	1204	1376	1548
	NC	18	25	32	35	40	43	46
<b>36 x 10</b>	1.96	588	784	980	1176	1372	1568	1764
	NC	18	26	33	37	41	44	47
<b>40 x 10</b>	2.2	660	880	1100	1320	1540	1760	1980
	NC	19	27	34	38	42	45	48
<b>48 x 10</b>	2.68	804	1072	1340	1608	1876	2144	2412
	NC	20	29	36	41	44	47	50
<b>12 x 12</b>	0.63	189	252	315	378	441	504	567
	NC	<15	19	27	31	35	39	42
<b>14 x 12</b>	0.78	234	312	390	468	546	624	702
	NC	<15	20	27	31	35	39	42
<b>16 x 12</b>	0.92	276	368	460	552	644	736	828
	NC	15	21	28	32	36	40	43
<b>18 x 12</b>	1.07	321	428	535	642	749	856	963
	NC	15	22	29	33	37	40	43
<b>20 x 12</b>	1.22	366	488	610	732	854	976	1098
	NC	16	23	30	34	38	41	44
<b>22 x 12</b>	1.36	408	544	680	816	952	1088	1224
	NC	16	23	30	34	38	41	44
<b>24 x 12</b>	1.52	456	608	760	912	1064	1216	1368
	NC	16	24	31	35	39	42	45
<b>28 x 12</b>	1.82	546	728	910	1092	1274	1456	1638
	NC	17	24	31	35	39	42	45
<b>30 x 12</b>	1.96	588	784	980	1176	1372	1568	1764
	NC	18	29	34	39	42	45	48
<b>32 x 12</b>	2.12	636	848	1060	1272	1484	1696	1908
	NC	18	29	34	39	42	45	48
<b>36 x 12</b>	2.41	723	964	1205	1446	1687	1928	2169
	NC	19	30	35	40	43	46	49

### GL PERFORMANCE DATA

Grilles Sizes In Inch	A.K Factor in Sq.Ft	Face Velocity (fpm)						
		300	400	500	600	700	800	900
		Negative Static Pressure ("W.G)						
		0.032	0.057	0.089	0.128	0.175	0.217	0.274
		AirFlow (cfm)						
<b>40 x 12</b>	2.71	813	1084	1355	1626	1897	2168	2439
	NC	20	31	36	41	44	47	50
<b>44 x 12</b>	3.01	903	1204	1050	1806	2107	2408	2709
	NC	21	32	36	41	45	48	51
<b>48 x 12</b>	3.31	993	1324	1655	1986	2317	2648	2979
	NC	21	33	37	42	46	49	52
<b>16 x 14</b>	1.11	333	444	555	666	777	888	999
	NC	16	22	29	33	37	41	44
<b>18 x 14</b>	1.29	387	516	645	774	903	1032	1161
	NC	16	22	29	33	37	41	44
<b>20 x 14</b>	1.47	441	588	735	882	1029	1176	1323
	NC	16	23	30	34	38	42	45
<b>24 x 14</b>	1.82	546	728	910	1092	1274	1456	1628
	NC	17	24	31	35	39	42	45
<b>28 x 14</b>	2.16	648	864	1080	1296	1512	1728	1944
	NC	17	25	32	36	40	43	46
<b>30 x 14</b>	2.33	699	932	1165	1398	1631	1864	2097
	NC	17	26	32	37	40	43	46
<b>32 x 14</b>	2.5	750	1000	1250	1500	1750	2000	2250
	NC	18	27	33	38	41	44	47
<b>36 x 14</b>	2.84	852	1136	1420	1704	1988	2272	2556
	NC	18	29	34	39	42	45	48
<b>16 x 16</b>	1.32	396	528	660	792	924	1056	1188
	NC	<15	<15	18	26	29	33	37
<b>18 x 16</b>	1.52	456	608	760	912	1064	1216	1368
	NC	<15	<15	20	28	31	35	39
<b>24 x 16</b>	2.11	633	844	1055	1266	1477	1688	1899
	NC	<15	17	24	30	33	37	41
<b>28 x 16</b>	2.51	753	1004	1255	1506	1757	2008	2259
	NC	<15	19	26	32	35	38	40
<b>30 x 16</b>	2.71	813	1084	1355	1626	1897	2168	2439
	NC	16	22	27	33	36	39	42
<b>32 x 16</b>	2.91	873	1164	1455	1746	2037	2328	2619
	NC	17	24	29	34	38	41	44
<b>36 x 16</b>	3.31	993	1324	1655	1986	2317	2648	2979
	NC	19	28	32	37	41	43	46
<b>18 x 18</b>	1.74	522	696	870	1044	1218	1392	1566
	NC	17	23	31	35	39	43	46
<b>24 x 18</b>	2.41	723	964	1205	1446	1687	1928	2169
	NC	18	25	32	36	41	44	47
<b>28 x 18</b>	2.75	825	1100	1375	1650	1925	2200	2475
	NC	18	25	32	36	41	44	47

### ❖ GL PERFORMANCE DATA

Grilles Sizes In Inch	A.K Factor in Sq.Ft	Face Velocity (fpm)						
		300	400	500	600	700	800	900
		Negative Static Pressure ("W.G)						
		0.032	0.057	0.089	0.128	0.175	0.217	0.274
		AirFlow (cfm)						
<b>30 x 18</b>	3.08	924	1232	1540	1848	2156	2464	2772
	NC	19	25	33	37	41	45	48
<b>36 x 18</b>	3.75	1125	1500	1875	2250	2625	3000	3375
	NC	20	26	34	38	42	46	49
<b>40 x 18</b>	4.2	1260	1680	2100	2520	2940	3360	3780
	NC	21	27	35	39	43	47	50
<b>20 x 20</b>	2.21	663	884	1105	1326	1547	1768	1989
	NC	18	24	31	35	39	43	47
<b>24 x 20</b>	2.71	813	1084	1355	1626	1897	2168	2439
	NC	19	25	32	36	40	44	48
<b>30 x 20</b>	3.45	1035	1380	1725	2070	2415	2760	3105
	NC	19	30	34	38	42	45	49
<b>36 x 20</b>	4.2	1260	1680	2100	2520	2940	3360	3780
	NC	19	31	35	40	44	47	51
<b>40 x 20</b>	4.61	1383	1844	2305	2766	3227	3688	4149
	NC	19	32	36	41	45	49	52
<b>48 x 20</b>	5.44	1632	2176	2720	3264	3808	4352	4893
	NC	19	33	38	43	47	51	54
<b>24 x 24</b>	3.3	990	1320	1650	1980	2310	2640	2970
	NC	19	30	34	40	43	46	49
<b>36 x 24</b>	5.09	1527	2036	2545	3054	3563	4072	4581
	NC	21	32	37	42	45	48	51
<b>48 x 24</b>	6.88	2064	2752	3440	4128	4816	5504	6192
	NC	23	34	40	44	48	51	54
<b>30 x 30</b>	4.97	1491	1988	2485	2982	3479	3976	4473
	NC	18	29	34	40	43	46	49

**Notes:**

- All pressures are in inch of water.
- N.C values are based on octave band 2-7 sound power levels minus a room absorption of 10db.