



#### ❖ LMSD APPLICATION

LMSD modular slot diffuser is an excellent choice for interior spaces requiring a visually pleasing single slot, high performance diffuser. The modular slot diffusers are designed to complement the flow bar linear diffuser system for most lay-in suspension systems to fully integrate into the ceiling system.

LMSD modular slot diffuser is designed so the ceiling material can be field cut and inserted in the face of the diffuser. This gives the architect the opportunity to blend the air distribution system into the ceiling design. LMSD can be field adjusted for one, two, three, or four-way directional air patterns. This flow pattern control gives the designer the flexibility to use the diffuser in a wide range of space sizes and configurations.

#### ❖ LMSD STANDARD CONSTRUCTION / FEATURES

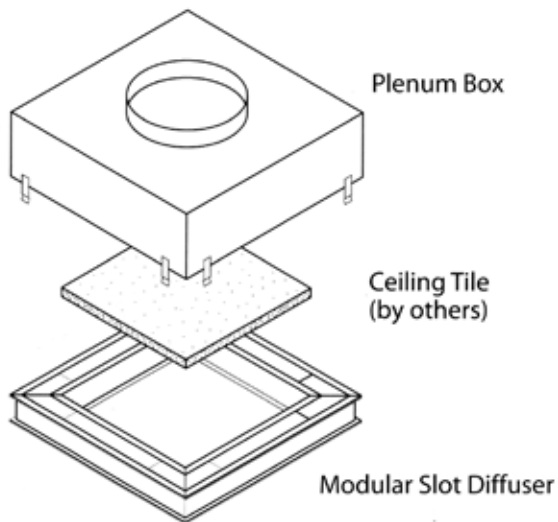
- Frame & deflector are made of extruded aluminum.
- Phosphate treated and powder coated white RAL 9010 as standard.
- Standard size 595 x 595 mm or 603x603mm



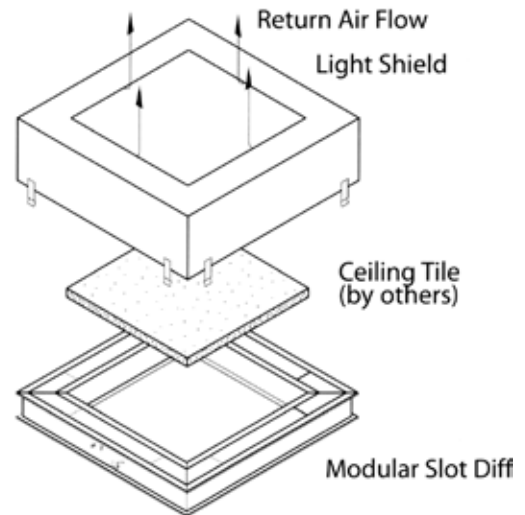
### ❖ LMSD OPTIONS

- Factory integral plenum and hoods supplied along with the unit.
- Finish any color from RAL chart.

**Modular Flow Supply**



**Modular Flow Return**



### ❖ LMSD ORDER KEY INFORMATION

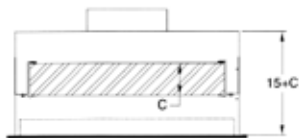
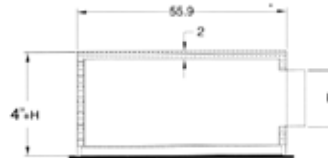
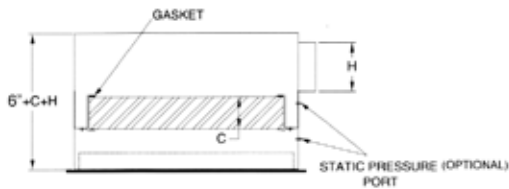
LMSD - A + PB

<div style="border-left: 1px solid black; border-right: 1px solid black; height: 100px; margin: 0 10px;"></div>	<b>Accessories</b>	Plenum Box w/o Insulation (PB), Plenum Box c/w 5mm P.E foam Insulation (PBL).
	<b>Material</b>	Aluminum (A).
	<b>Model</b>	LMSD – Modular Slot Diffuser

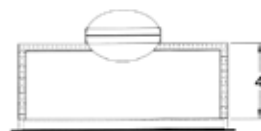


❖ **LMSD PLENUM BOX STANDARD CONSTRUCTION**

- 0.6mm Galvanized Steel (Options available)
- Round Inlet or oval inlet
- 5mm P.E foam internal lining, for model PBL. Lining is secured to plenum box by adhesive.



**PLENUM BOXES  
WITH HEPA FILTER  
(PBH)**



**INSULATED  
PLENUM BOXES  
(PBL)**

**NON-INSULATED  
PLENUM BOXES  
(PB)**

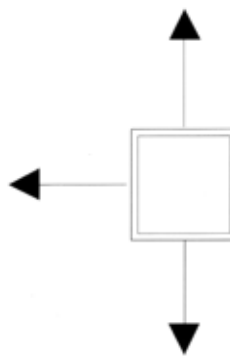
❖ **LMSD AIR PATTERN ADJUSTMENT**



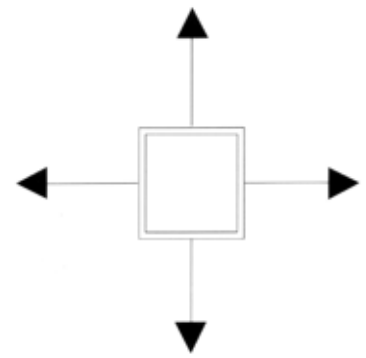
**One Way**



**Two Ways**



**Three Ways**



**Four Ways**

### ❖ LMSD PERFORMANCE DATA

Modular Slot 603 x 603mm or 595 x 595mm 1-Slot Data

		Neck Velocity Fpm	300	400	500	600	700	800	900
		Velocity Pressure (In.W.g)	0.006	0.01	0.016	0.022	0.01	0.016	0.022
1" Slot Width	6"Ø Inlet	Airflow-cfm/ft	59	78	98	118	137	157	176
		Total Pressure	0.014	0.024	0.039	0.056	0.075	0.039	0.056
		NC	--	--	--	--	22	26	30
		Throw	2-3-7	3-4-9	4-5-11	4-7-13	5-8-15	6-9-16	7-10-17
	8"Ø Inlet	Airflow-cfm/ft	105	140	175	210	245	280	350
		Total Pressure	0.032	0.056	0.089	0.128	0.174	0.226	0.288
		NC	--	--	24	29	34	38	42
		Throw	4-6-12	5-8-15	4-6-12	8-12-19	9-14-19	10-15-22	12-16-23
	10"Ø Inlet	Airflow-cfm/ft	164	218	273	327	382	436	491
		Total Pressure	0.061	0.108	0.169	0.246	0.331	0.431	0.546
		NC	22	29	34	40	43	47	51
		Throw	6-9-16	6-9-16	10-15-21	12-16-23	14-18-25	16-19-27	16-20-29

#### Notes:

- All pressures are in Inch of Water.
- Throw data is based on Isothermal air, at 150, 100, and 50 fpm terminal velocities.
- NC values are based on a 10 dB reduction in discharge sound in all octave bands for room absorption.
- Blanks (--) indicate the NC level below 20NC.